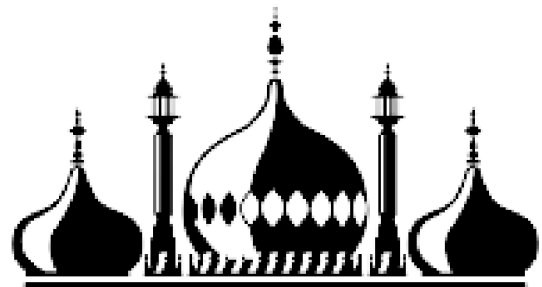




HEALTH AND INCLUSION PROJECT

JANE WOODHULL
INCLUSION AND ENGAGEMENT MANAGER



Brighton & Hove
City Council



Brighton and Hove
Clinical Commissioning Group

PURPOSE



Our Health & Inclusion Project (HIP) promotes LGBTQ health and wellbeing and gives members of our communities the chance to have their say about healthcare and council services in Brighton and Hove.

We inform and influence others including NHS Sussex, Sussex Councils and other charities across Sussex, sharing what we know and highlighting needs and inequalities that exist for LGBTQ communities and individuals.

We drive change and advocate for our communities



HEALTH & INCLUSION PROJECT

Switchboard
Connecting you to LGBTQ support

JUNE 2021

IMPACT OF COVID-19 ON LGBTQ COMMUNITIES OF BRIGHTON & HOVE



WWW.SWITCHBOARD.ORG.UK

 Brighton and Hove Clinical Commissioning Group

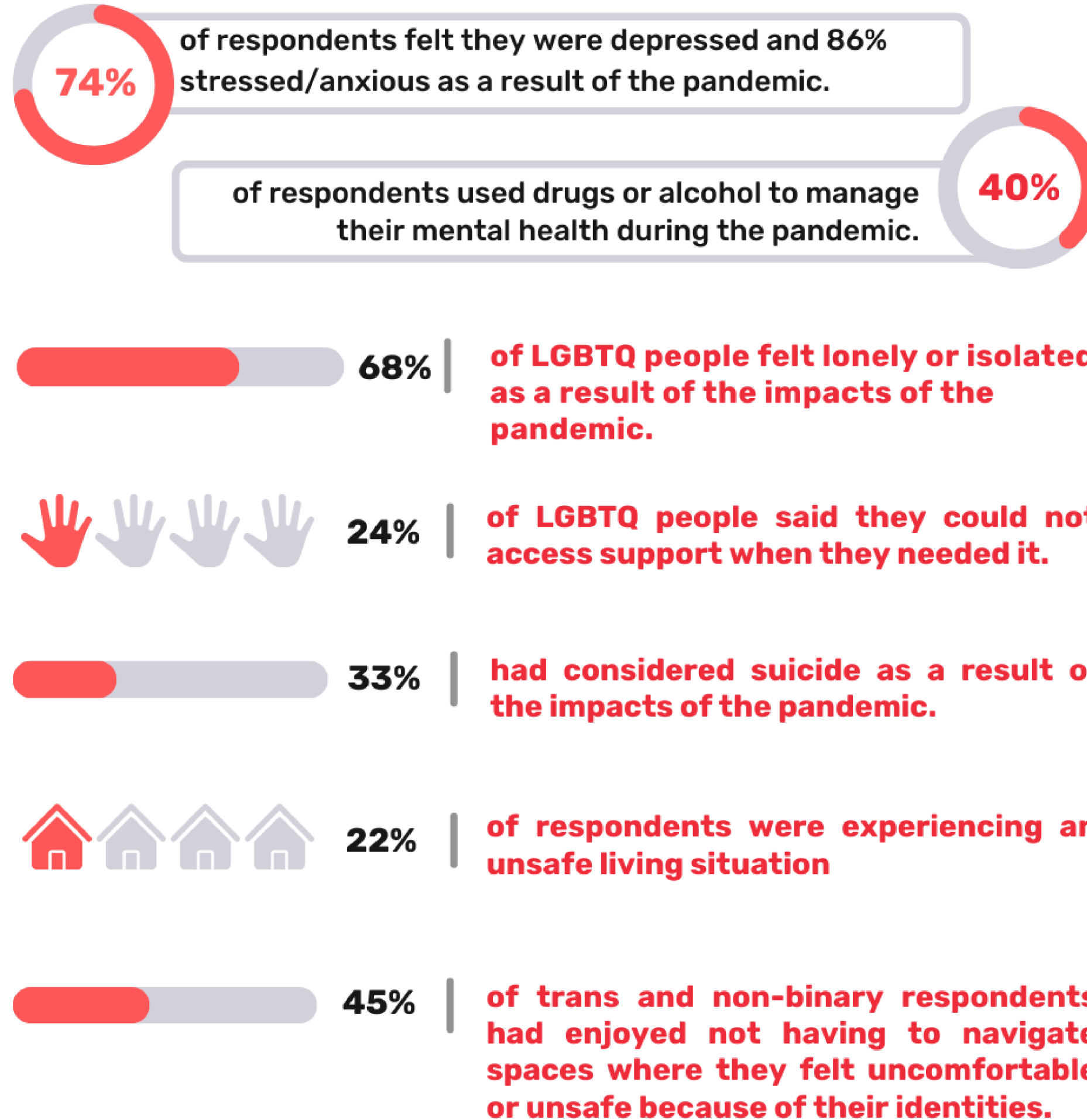
 Brighton & Hove City Council

Much of our Engagement has focused on priorities raised by communities in the Impact of Covid Report commissioned by BHCC and NHS last year.



“The pandemic has removed my previous support structure and isolated me from my queer community. I’ve felt lonelier this year than any other time in my life.”

KEY FINDINGS



“The LGBTIQ community needs to talk more about loss, dying, dignity and ageing.”

We have no plans for social care in old age as a community and we are going to be left vulnerable.

It is a fear I hold deeply. Who will wash my trans body when I am old?

What if my partner dies before me?

Losing people over Covid made me starkly aware of how desperately unprepared I am to cope with grief and ageing.”

HOUSING



 60%

of young people were experiencing an unsafe living situation

 43%

of trans/non-binary people were experiencing an unsafe living situation

 22%

of all respondents were experiencing an unsafe living situation



"I was forced back to my parents' house ... which greatly worsened my depression, anxiety and PTSD.... put into emergency accommodation after deeming my parents' place an unsafe living situation. Being homeless and living in a damp dark basement with black mould for 4 months did bad things for my mental health, and it is only now I have found a private rented, safe place to live that I am starting to be able to recover. However, my PTSD has increased significantly."

LGBTQ+ Housing Summit



It is repeatedly highlighted that unsafe housing, which is not LGBTQ+ affirmative, is inextricably linked to poor mental and physical health outcomes.



The stress, an infestation of black mould and a general sense of unsafety (in the emergency accommodation) has led to chronic physical health issues which I will now have for the rest of my life. I also suffer with Complex Post Traumatic Stress Disorder from my time there; I still cannot walk past that building without my heart rate and breathing increasing or my hands shaking.

- 120+ attendees
- Community panel led the day
- Speakers were academic researchers and innovators from elsewhere
- Community partnership action focused workshops
- LGBTQ+ Housing manifesto being written
- Out of this has come the LGBTQ+ night shelter pilot



Engagement at 'The Bevy'

- Partnership with local LGBTQ+ Community members and TDC
- LGBTQ+ quiz and bingo events, Saturday market and coffee morning
- Identified need for LGBTQ+ inclusion training
- Community members have accessed our services

"We need to reduce social isolation and foster informal community support and recognise the importance of social venues as a protective factor in peoples health and wellbeing"



Health and social care experience of LGBTQ+ people



- Ignorance about fertility issues, prenatal care and cancer screening
- Inadequate trans health care - 'broken arm syndrome', being outed inappropriately
- Heteronormative and cis normative assumptions
- Being 'outed inappropriately
- expectations of poor treatment
- Reluctance to discuss sex
- Younger people reported not knowing they could give feedback about care

Impact You Have As Helpline Volunteers

- You are Switchboard's listening ear!
- You hear first hand the challenges LGBTQ+ people are facing
- The data from the Helpline identifies themes across our communities
- I present this data and the themes at places like council meetings (Most recent was the Tourism, Equalities and Culture Committee)
- You provide evidence for funding bids
- You, along with other services inform my priorities of what the next engagement should be



Thank You and Questions

Please don't hesitate to contact me!

jane.woodhull@switchboard.org.uk